



PORTFOLIO

KAJAL SHAH

CONTENT

FOLIAGE COLLECTION

ENTOMOPHILE COLLECTION

GARIMA COLLECTION

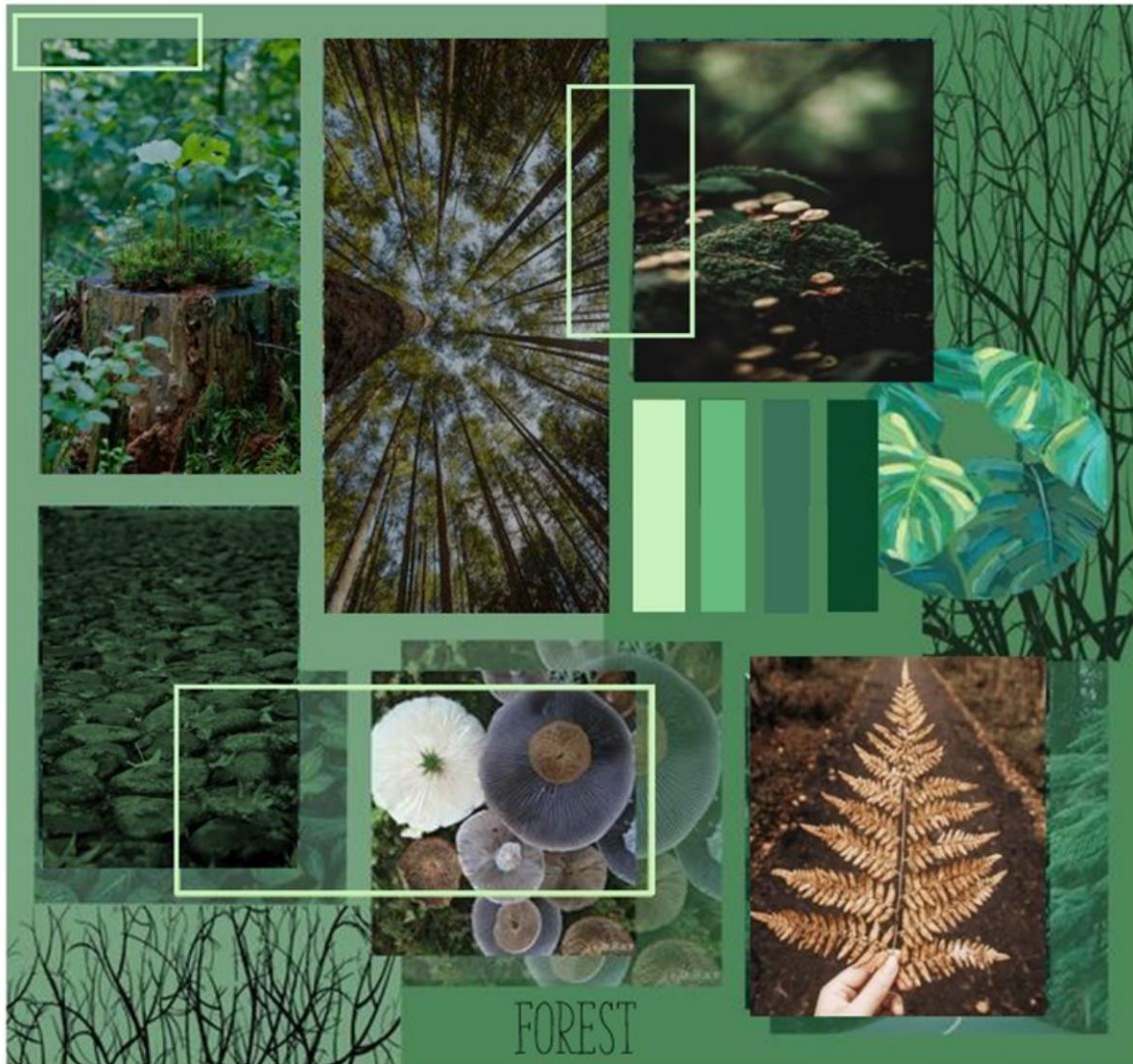
CAD RENDERING

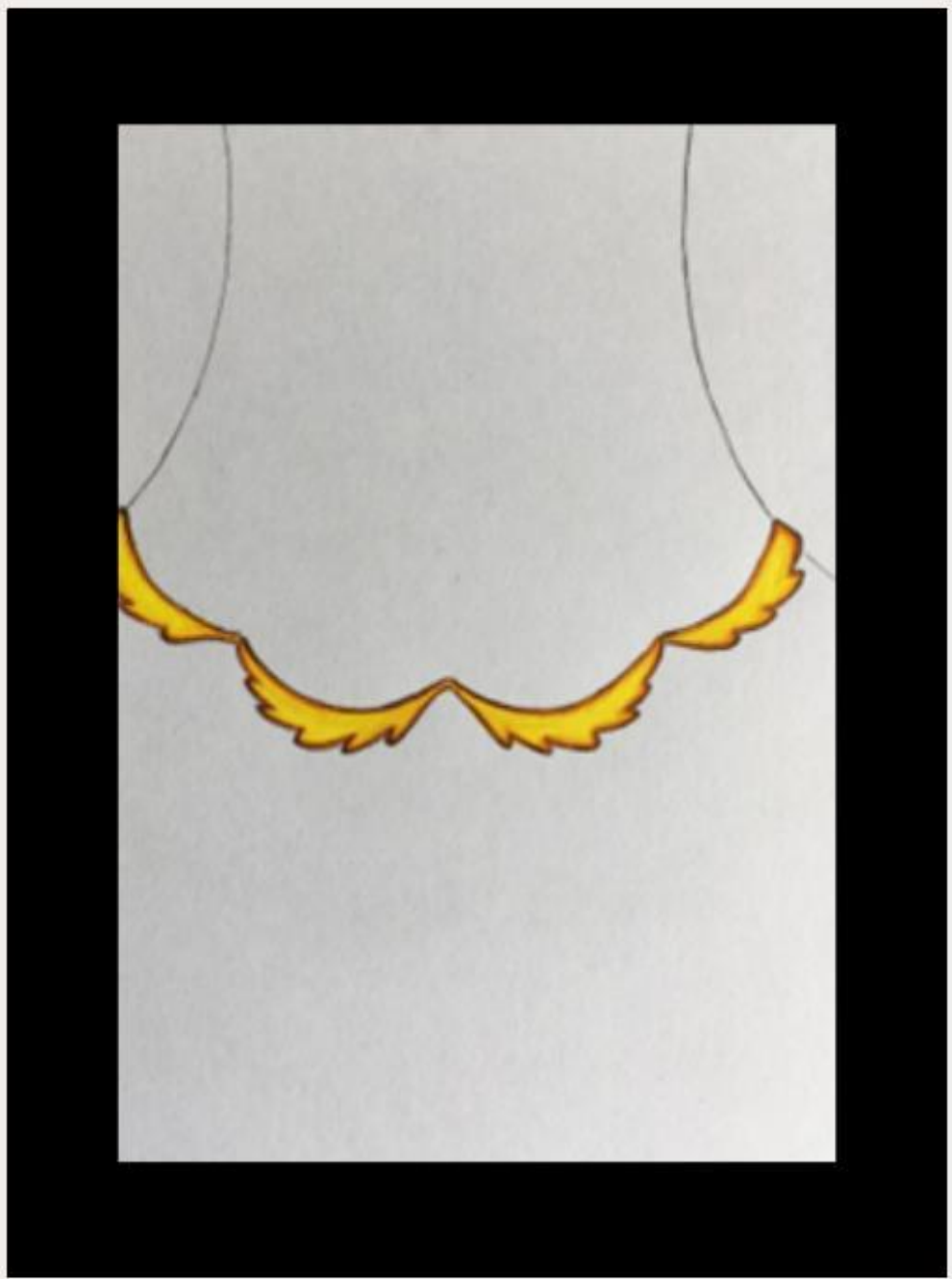
CONCEPTUAL JEWELRY

HAND'S ON

FOLIAGE COLLECTION

"Foliage Collection" – a captivating fusion of nature's intricate beauty and minimalist design. Inspired by the enchanting world of forests, this collection is a celebration of various leaves, transcending the boundaries of specific trees. Each piece in the collection reflects simplicity and elegance, capturing the essence of foliage in its purest form. Crafted with precision, the simple brass jewelry showcases the delicate details of leaves, offering a unique blend of nature-inspired aesthetics and minimalistic charm.





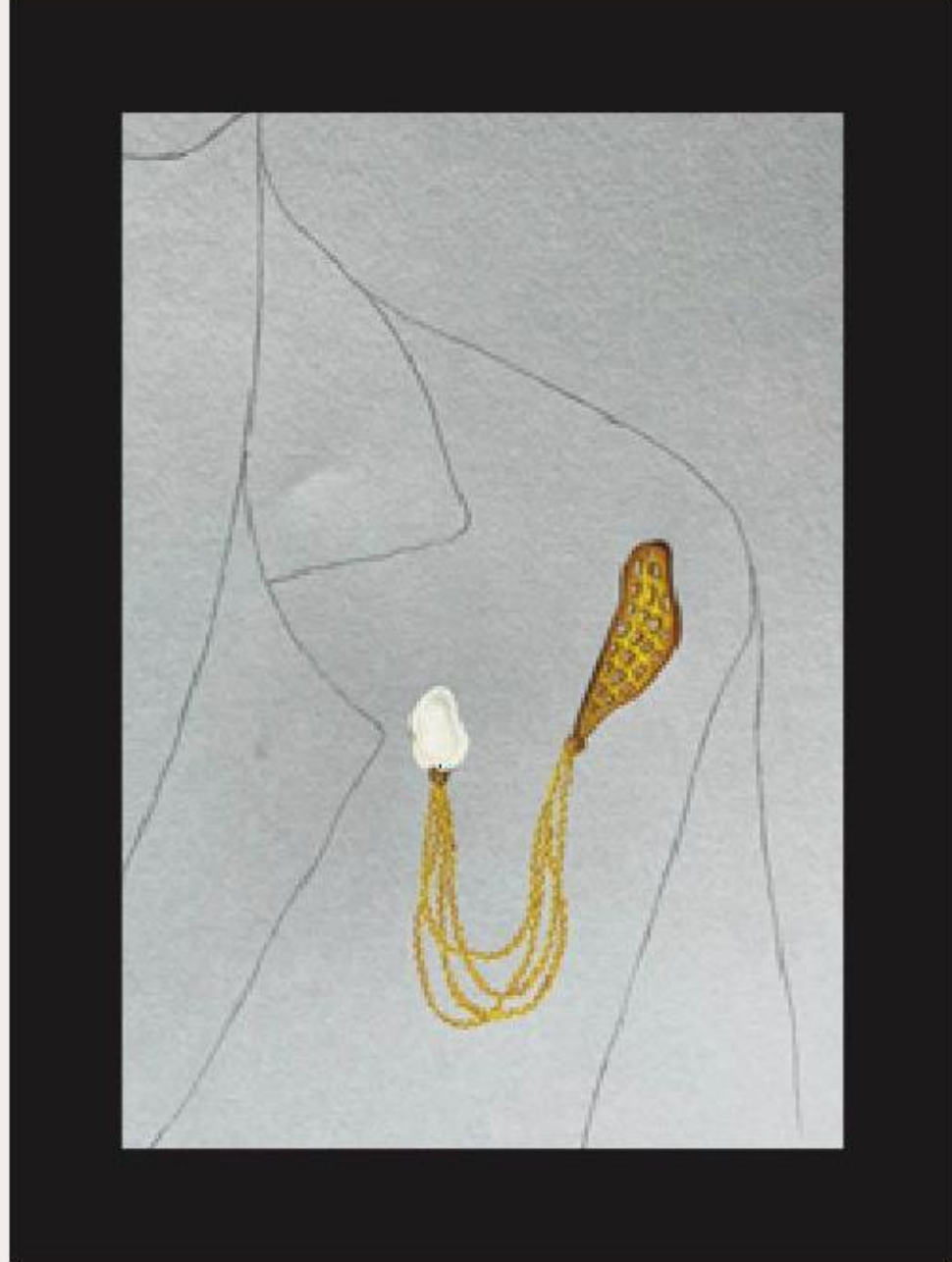


FINAL
OUTCOME

ENTOMOPHILE COLLECTION

"Entomophile Collection" – a mesmerizing ensemble for those drawn to jewelry inspired by insects. Drawing inspiration from the trend-setting style of the renowned brand "Outhouse," this collection embodies the essence of peculiar designs and on-point trends. Each piece is a minimalist masterpiece, featuring baroque pearls that add a touch of contemporary elegance.







FINAL
OUTCOME



GARIMA COLLECTION

"Garima Jewelry" – a collection inspired by the rich heritage of Maharashtrian jewelry. Designed for the trend-loving and creatively adventurous, this collection is a tribute to grace and beauty. The word "Garima" in Marathi signifies the inherent elegance and charm of an individual, and this jewelry line aims to showcase just that. Each piece is a blend of tradition and contemporary flair, celebrating the graceful persona of the wearer.

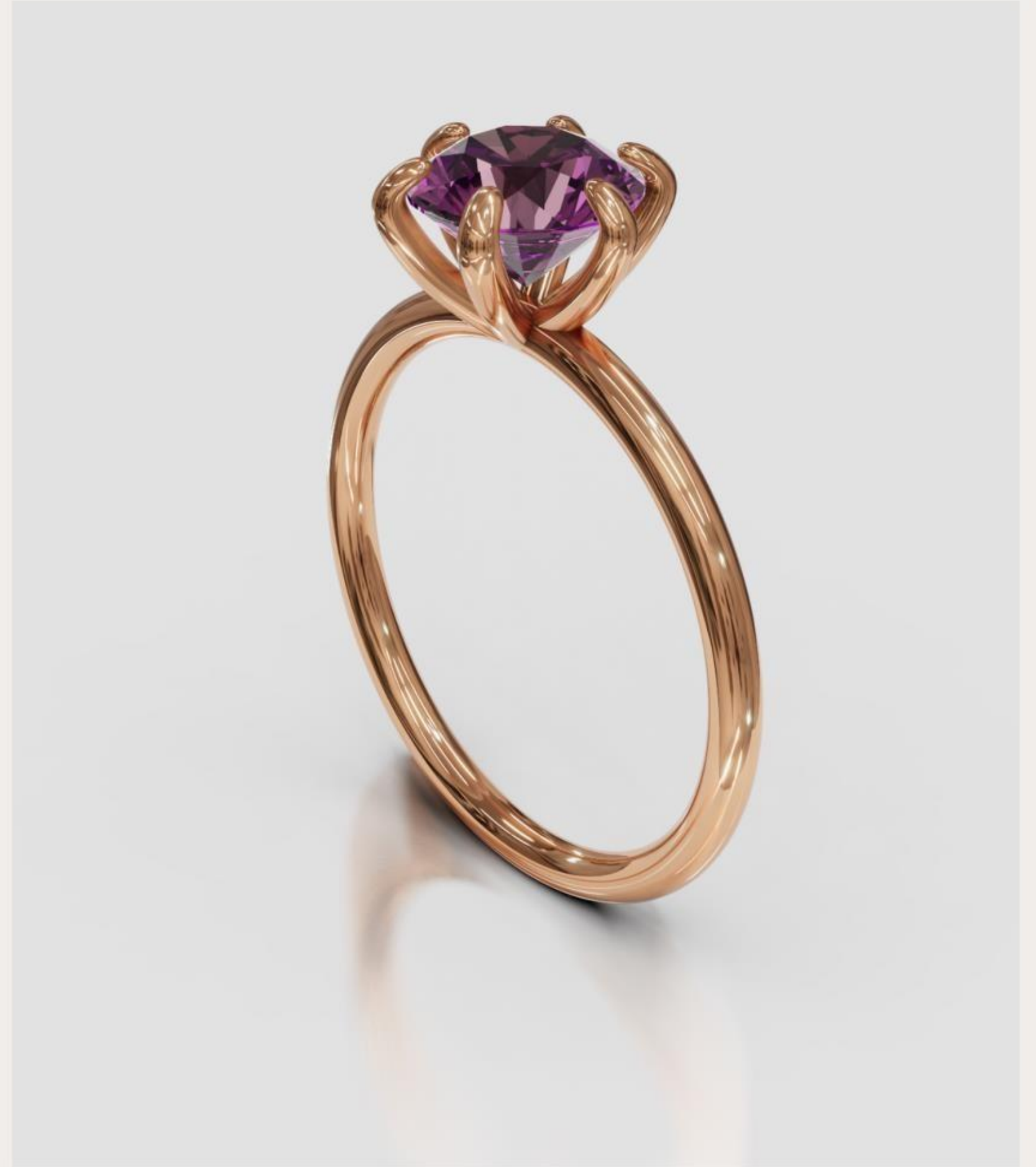






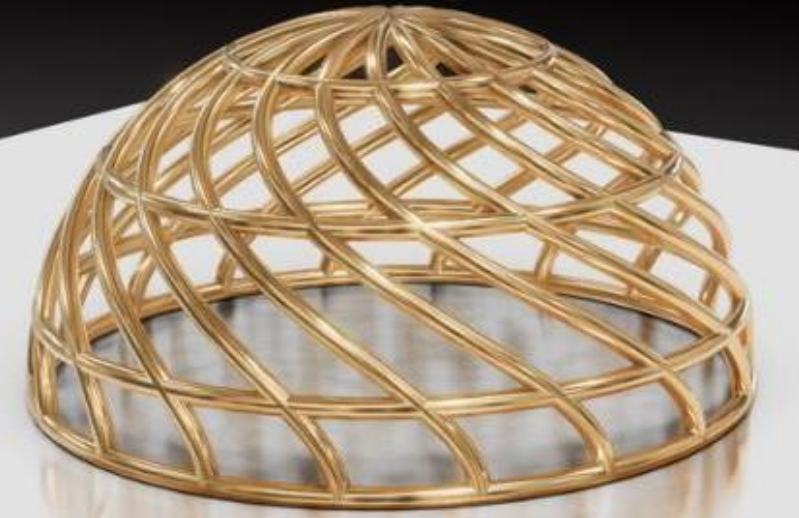
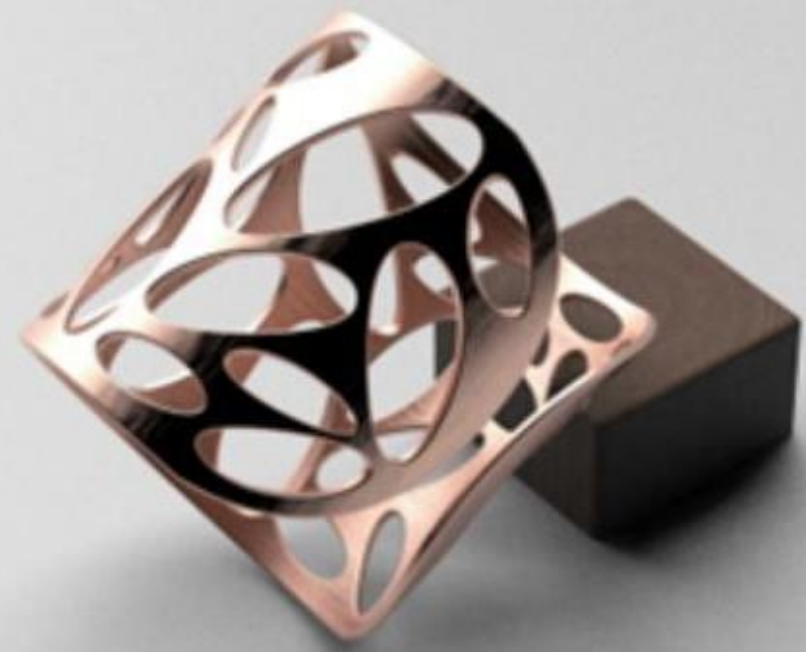
FINAL
OUTCOME

CAD RENDERING









CONCEPTUAL JEWELRY

NIRMAAN



PATJHAD



MISHRAN



NUIDA LAYAN



BEADVIO COLLECTION

THANKYOU